

MID-CONTINENT AIRCRAFT CORPORATION

# PLANEGRAM

## AN EVEN CLOSER ENCOUNTER!!

TAKEN FROM: *PILOT CLASSES OF WWII JULY/AUG 11*

Member Harry Risius sent in this remarkable happening back in 1943 over the Tunis dock area.

German fighters were attacking the 414 Bomb Squadron when one of the fighters went out of control and collided with

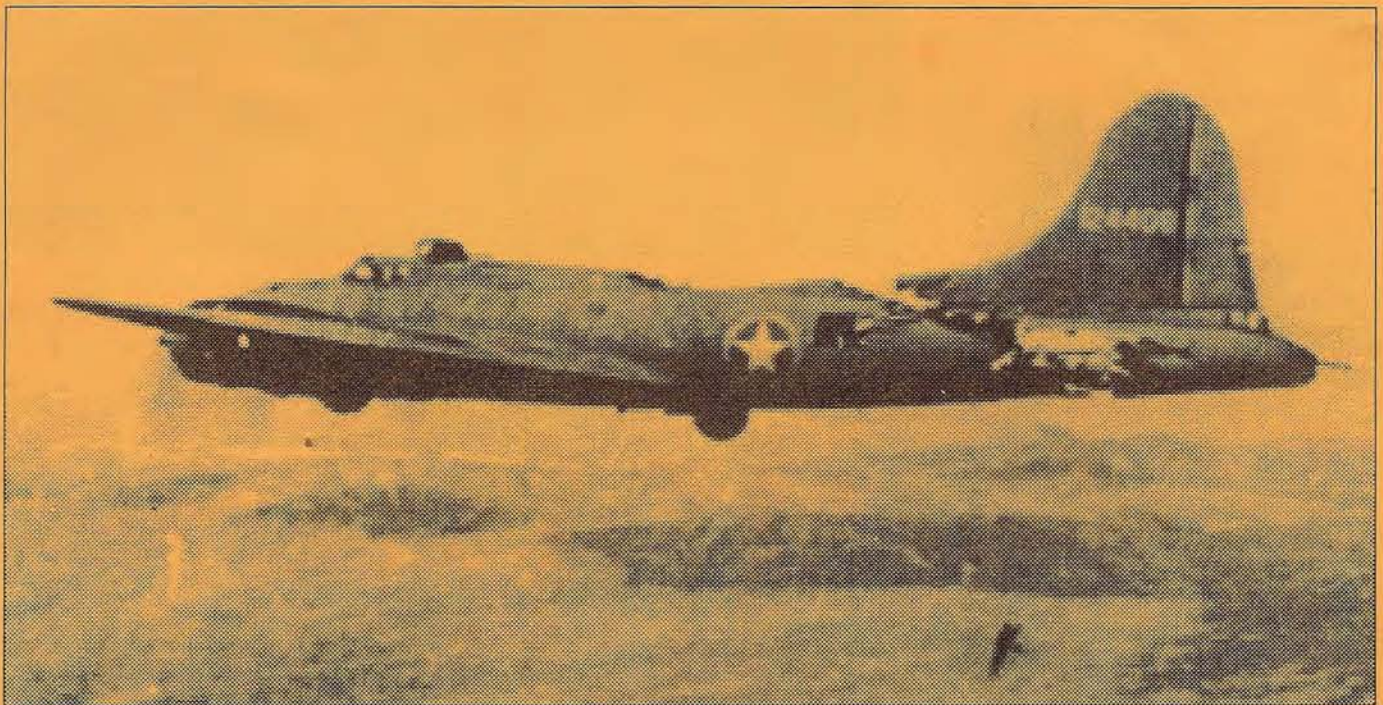
one of the 17's.

As you can see, he sliced through the fuselage and tore the left horizontal completely away. The vertical was damaged and the tail part of the fuselage was held together by two small parts

of the airframe. The hole at the top was 16 feet long and 4 feet wide and the split went from the top turret to the tail gunners position.

The tail section actually

*continued inside*



### Mission Statement:

We are a leading professional organization committed to the advancement of general and agricultural aviation technology. Our team provides a vital resource to the aviation community and is dedicated to the highest satisfaction and well-being of those we serve.

bounced and swayed in the wind and twisted when the plan turned...Only one elevator cable hadn't been severed and the plane still flew. The tail gunner was trapped because there was no floor between he and the rest of the aircraft and they found out a bit later that the weight was contributing to the stability of the weakened section...After this happened, the pilot continued to the target and dropped their bombs.



When the bay doors were opened, it blew one of the waist gunners into the tail section and it took four crewmen to pull him back out with parachute rigging. The pilot started turning for home, very cautiously to keep the tail from twisting off. Two engines were out and they were losing altitude and then two German fighters jumped them but they were driven off by the gunners. The waist gunners were actually stand-

ing with their heads sticking out through the hole in the fuselage.

Channel ditching was an option to be tried, but they were picked up by some P51's who radioed ahead and stayed with them when the decision was made to try landing. There were no chutes available. The landing was a successful and there were no casualties on board. Pilot K.R. Brag and crew, real hero's!!!



**DO YOU REALIZE HOW HAPPY  
NEW THRUSH OWNERS ARE?  
IT'S A WHOLE NEW WORLD  
2011 NOW AVAILABLE  
IN PRODUCTION 510-34 IN STOCK**

### Mid-Continent E-Mail Directory

A/C Sales	<a href="mailto:sales@midcont.com">sales@midcont.com</a>
A/C Parts	<a href="mailto:parts@midcont.com">parts@midcont.com</a>
A/C Insurance	<a href="mailto:acinsurance@midcont.com">acinsurance@midcont.com</a>
GPS Sales/Serv	<a href="mailto:cpatterson@midcont.com">cpatterson@midcont.com</a>

### Our Mission

#### To keep you flying.

Since 1949, Mid-Continent Aircraft has been the leader in Agricultural Aviation by providing a variety of services that exceed our customers' expectations.

As we move into each day, we will continue to grow with your business and provide the tools you need to be a success.

GPS • Sales • Services • Insurance • Parts & Services

# PLANEMART

Check our website  
for more pictures  
and specs.  
[www.midcont.net](http://www.midcont.net)

AG-Aviation's most complete inventory of new and used aircraft, ground support systems  
with parts and maintenance service - backed by 62 years of experience and integrity.

## THRUSH

Taking orders for 710  
Thrush with -65 or -67  
Rugged Construction  
Proven Productive

### Thrush Dealer

U.S., Canada, Mexico  
Special price savings.  
Equipped as sprayers. In  
Stock

### 2011 Thrush 510 PT6- 34

Zero since new, spray-  
er, air, Load Hawg  
options.

### 2009 Thrush PT6-34

1800TT, GPS, flow control,  
Load Hawg, hopper rinse,  
fully equipped, bottom fuel,

**NDT  
WING INSPECTION  
AVAILABLE  
THRUSH  
AIR TRACTOR**

## AIR TRACTOR

### 2001 Air Tractor 402A

4550 TT, 600 HIS, M3, flow  
control, VG's, bottom fuel,  
fail safe instlled.

### 1993 Air Tractor 401

Geared 1340 Covington,  
330 SOH hydramatic, 2  
years to inspection, Air,  
smoker, electric brake,  
TXP, Ky196, Satloc Lite

### DISTRIBUTOR

Cascade Pressure Cowl  
Air Tractor - Thrush  
Save Fuel, Runs Cooler  
Call For Quote

Superior experienced, quality, no corners cut,  
FAA certified Repair Station:  
Specialist Spar Replacement

## AG CAT

### 1975 Ag Cat 600

5100 Total, 838 SMOH  
Tulsa, extended, metalized  
wings, new paint, 80 fuel,  
LiteStar, Crop Hawk, CP's,  
smoker, flagger, New  
annual by Hershey.

### 1975 Ag Cat 450 HP

Extended wings, sealed  
cockpit, servos, weathaero,  
all yellow, hydromatic. AS  
IS ONLY \$65,000.00

### 1962 Ag Cat 450

Sprayer, needs overhaul.  
A rebuilder, metalized, now  
disassembled. \$21,000.00

## CESSNA

### 1980 Cessna Husky

5550 Total, 475 SMOH,  
New blades on prop, Satloc  
99.5, smoker, new super  
boom, NDH, New Annual.

### 1974 Cessna AgWagon

4600 TT, 1050 SMOH, wing  
tanks, Satloc lifestar, New  
Annual

## PIPER

### 1971 Pawnee C 235

2800 TT, 250 Factory  
remand, KT 76 Radio,  
Aircare exhaust, sprayer,  
always hangared.

### 1965 Pawnee B 235

3082 Total, 914 SMOH,  
light star, smoker, flagger,  
ceconite, AD, CW, New  
annual.

### IN CANADA: 1981 Paw- nee D235

370 TT, new annual, COM,  
booster tips, always  
hangared

Let us sell your  
Ag Aircraft  
World Wide Sales  
Consignment Accepted

## INSURANCE

Sharon Watkins  
Ins. Mgr/Producer  
Laura Terrett, Producer  
Kristin Pullam, Producer  
Josh Rittenberry,  
Producer  
Jennifer Bullington, CSR  
Heather Riggs,  
Claims/Producer  
800-325-0885  
Fax: 573-359-0384  
E-Mail:

[acinsurance@midcont.com](mailto:acinsurance@midcont.com)

## GENERAL AVIATION

We Are A  
General Aviation Cessna  
Single Engine Distributor  
Call us for New/Used  
Aircraft  
and All Cessna Parts.

### 2010 Cessna T206

Fully equipped with Float  
Provision Kit. FTO.

### Cessna 162 LSA "Skycatcher"

Now taking orders  
**Mooney Super 21**  
3796 TT, 93 hours since  
major, 3 blade prop, refurb,  
2006 paint, IFR's. A real  
good buy.

## TRUCKS

Several load trucks  
foldover boom, water  
also.

From \$6000.00 and up

## PARTS

World's Largest  
CP Nozzle Dealer

New Swathmasters  
Piper Brave, Pawnee, Air

Tractor, Thrush, Ag Cat

•••••  
• **FOR THE LIFE OF ME** •  
• (MY ENGINE) •  
• **CASCADE TURBO** •  
• **INLETS** •  
• Saves fuel - Lower ITT •  
• **Distributor:** •  
• **Mid-Continent Aircraft** •  
• **573-359-0500** •  
•••••

## Cool Start Kit for Turbines

### Load Hawg

Efficient, Safe,  
mechanical  
loading of solids,  
eliminate  
wing man, STd

All Types Spreaders  
New & Used - 25", 38", 41"  
Transland, Breckenridge.

### Thrush Spar Caps Now Available

Let Mid-Continent  
install your next spar.  
Sign up now.

### Top of The Line Hand Held Garmins GPSMAP 496 or 396

Also other models  
for sportsmen

### WANT TO SELL OUT? INVESTORS ARE INTERESTED

Free Pilot Placement

SATLOC Level III  
Service Center  
Del Norte Systems  
Full in house repair  
New Or Used  
WAAS Updates